

Bryn Mawr Town Place

One Town Place - Bryn Mawr, PA 19010

SUBLEASE

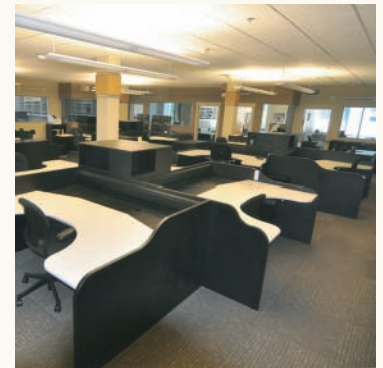
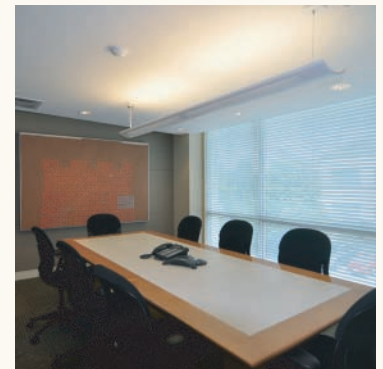
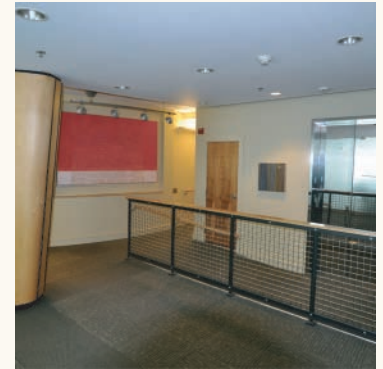


Features:

- Modern furnished Class "A" offices
- Located in downtown Bryn Mawr with easy access to dining, shopping and commuter rail
- Private restrooms
- Full building back-up generator
- Raised floors
- Signage available on Lancaster Avenue
- Abundant parking
- Wheelchair accessible

Availability:

- 10,187 RSF on the second floor with private, secured elevator
- Sublease through January 31, 2023



For Further Information:

James Wilson

610.552.6582 | jwilson@mahoneyrealty.com

PJ Dandridge

610.552.6586 | pj@mahoneyrealty.com

MRG

Mahoney Realty Group, Inc.

9 Cricket Terrace | Ardmore, PA 19003

610.645.4500

No warranty or representation, expressed or implied, is made to the accuracy of the information contained herein, and same is submitted subject to errors, omissions, change of price, sale, or other conditions, withdrawals without notice and to any special listing conditions imposed by our principals.