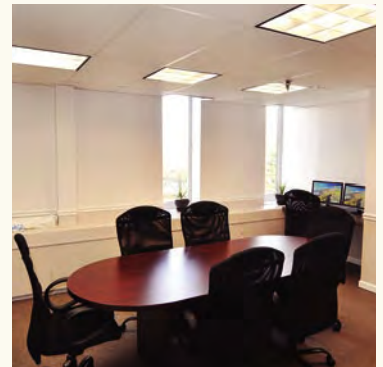
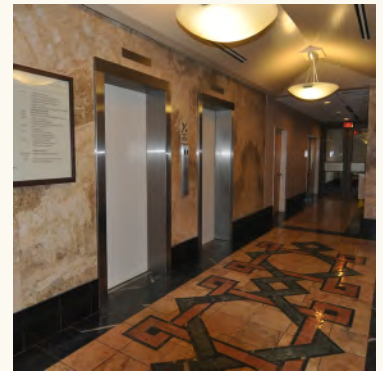


# 301 City Line Avenue

Bala Cynwyd, PA 19004

FOR LEASE



## Features:

- Professional office & medical building
- On-site property management
- True full service lease rates (no pass-throughs over a base year)
- Directly adjacent to Septa's City Avenue bus lines (Routes 1, 44 & 55)
- Ample parking

## Availability:

2nd Floor	1,104 RSF
3rd Floor	1,397 RSF (up to 2,752 RSF)
3rd Floor	1,355 RSF (up to 2,752 RSF)
3rd Floor	1,956 RSF

## For Further Information:

*James Wilson*

610.552.6582 | [jwilson@mahoneyrealty.com](mailto:jwilson@mahoneyrealty.com)

*PJ Dandridge*

610.552.6586 | [pj@mahoneyrealty.com](mailto:pj@mahoneyrealty.com)



**Mahoney Realty Group, Inc.**

9 Cricket Terrace | Ardmore, PA 19003

**610.645.4500**

No warranty or representation, expressed or implied, is made to the accuracy of the information contained herein, and same is submitted subject to errors, omissions, change of price, sale, or other conditions, withdrawals without notice and to any special listing conditions imposed by our principals.